



# Dually Identified Students

Division of Support for Emerging Bilingual Students  
February 26, 2025



## **Dr. Xóchitl Anabel Rocha**

Policy and Technical Assistance  
Manager for Bilingual Programs

# Our goal...



**Guide the state with focus and determination at the master plan level in developing the supports necessary to ensure educational opportunities for emerging bilingual students, ensuring their academic success.**

# The Objectives

- **Identify** the benefits of bilingual education, academic development, and bilingualism for children that are dually identified
- **Explore** the linguistic and academic supports of dually identified students in PK-12<sup>th</sup> grade classrooms



# Topics

---

Bilingual Education in Texas

---

The Academic and Language Benefits for **Dually Identified Students**

---

Impact on personal and social development

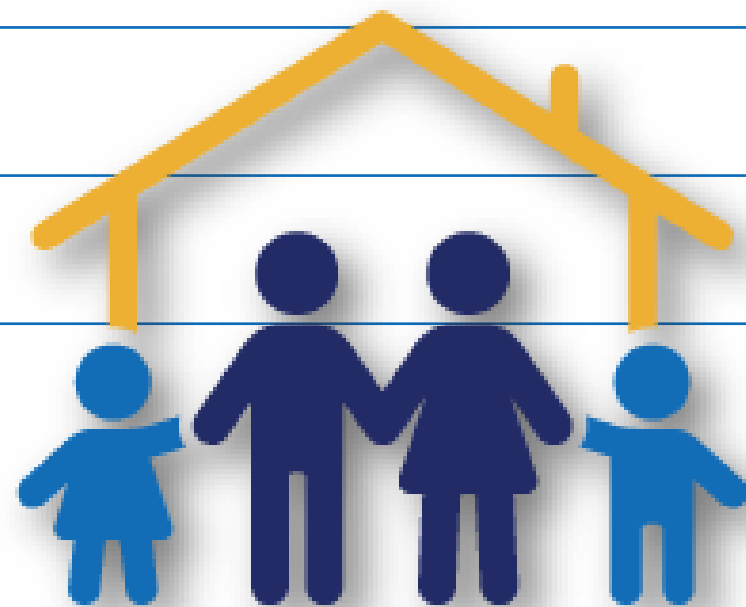
---

Resources for Parents and Families

---

Closing

---



# Bilingual Education in Texas



# Education in Texas

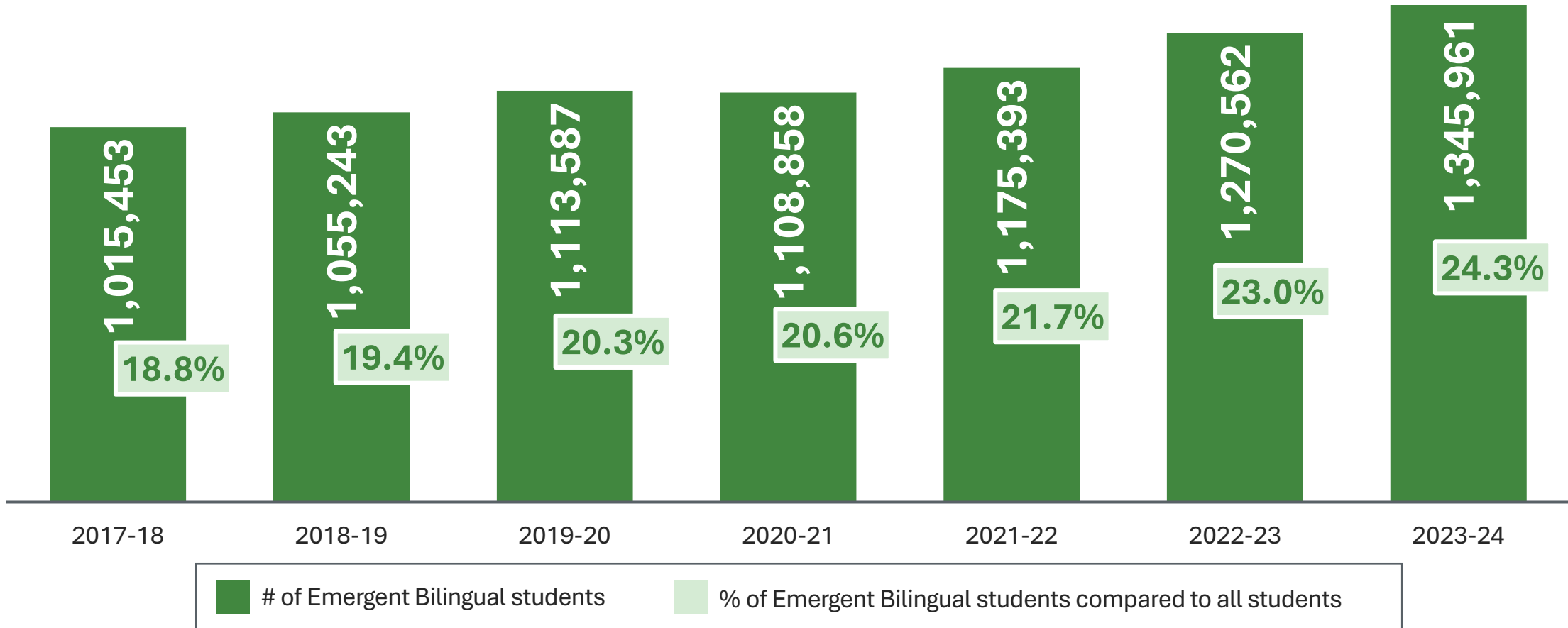


**99% of school districts provide services to emerging bilingual students**



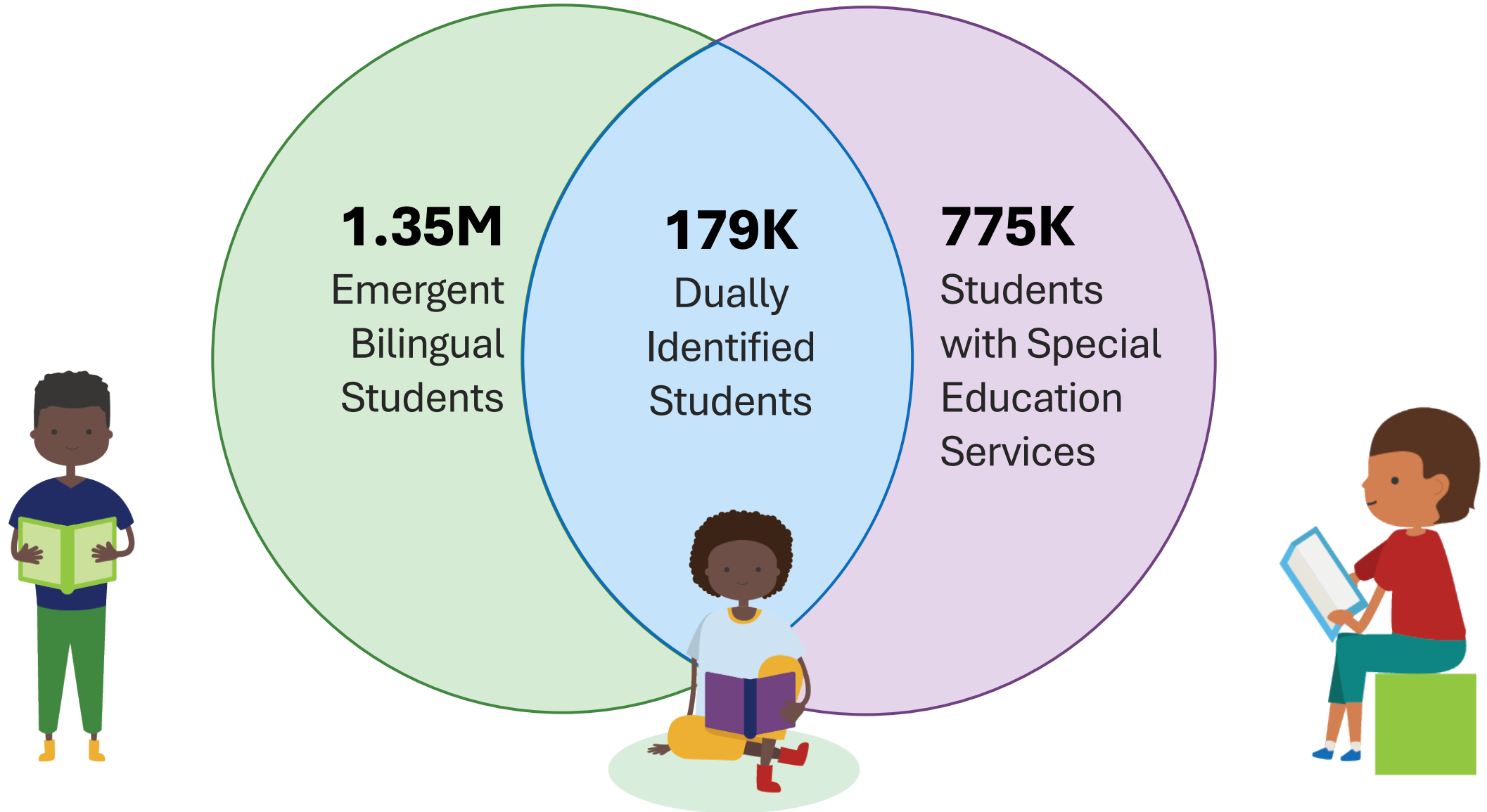
**24% are emerging bilingual students  
Over 1.3 Million**

# Emergent Bilingual Students in Texas





# The population of dually identified students



# Bilingual Education Programs

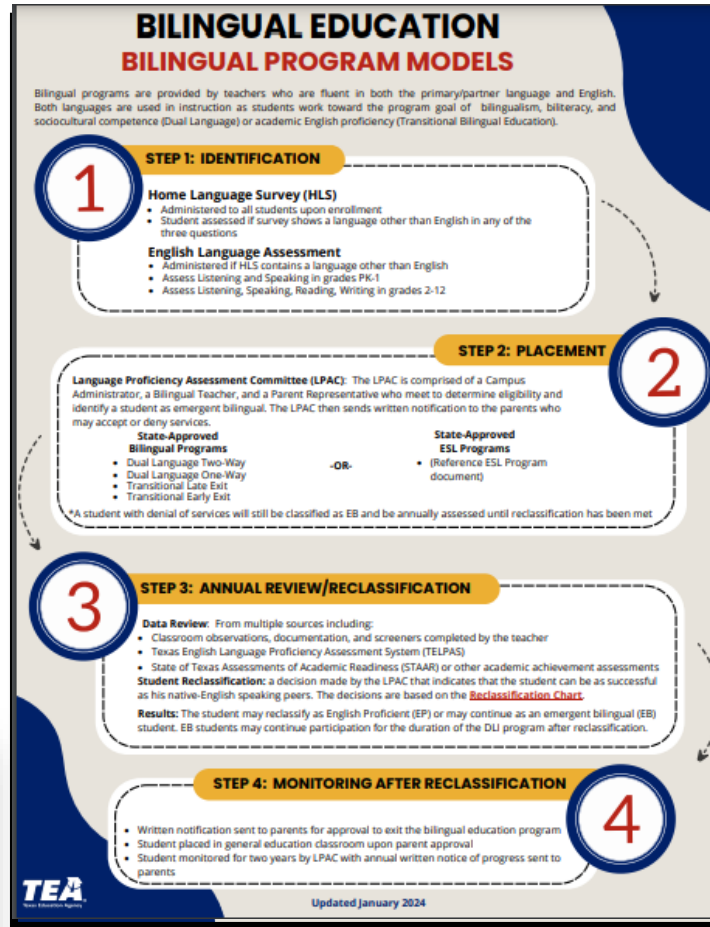
**Programas para Estudiantes Bilingües Emergentes**

Descripción de Video

**Información general sobre el programa de Inglés como segundo idioma (ESL, por sus siglas en inglés)**

**Descripción de los Programas de Educación Bilingüe de Transición**

**Descripción general de los programas de doble inmersión**



## Programs Serving Emergent Bilingual (EB) Students

**What is the purpose of the bilingual program?**

Bilingual programs are designed to make grade-level academic content accessible to emergent bilingual students through the development of literacy and academic skills in the child's primary/partner and English. The academic, linguistic, and cultural backgrounds of emergent bilingual students are used in a bilingual program as the platform for acquiring grade-level content and develop academic language in the primary/partner language and in English in all content areas.

**What are the four state-approved bilingual program models?**

In Texas, there are four state-approved bilingual program models:

Program Model Type	Goal	Instruction
Dual Language Two-Way	Emergent bilingual students attain bilingualism, biliteracy, and sociocultural competence to reach high levels of literacy and academic achievement in the partner language and English.	Emergent bilingual students receive instruction in literacy and academic content in their partner language as well as English from teachers certified in bilingual/ESL education. At least 50% of the instruction is delivered in the students' primary language for the duration of the program.
Dual Language One-Way	Emergent bilingual students utilize their primary language as a resource while acquiring full proficiency in English to participate equitably in school.	Emergent bilingual students receive instruction in literacy and academic content in their primary language as well as English from teachers certified in bilingual education. As the child acquires English, the amount of instruction provided in the primary language decreases until full proficiency in English is attained.
Transitional Bilingual Late Exit		
Transitional Bilingual Early Exit		

**What are the benefits of bilingual programs?**

Academic instruction is provided by teachers who

- are proficient in the primary language of your child, as well as English, and provide
- implements culturally and linguistically sustaining practices to leverage student's linguistic and cultural assets,
- are trained in second language acquisition methods and how to adapt instruction to meet the specific language needs of your child.

**Research indicates that children who participate in a bilingual program**

- build on a literacy foundation in their primary language to acquire stronger cognitive and academic skills in English;
- are more likely to meet graduation requirements with high academic achievement and college, career, and military ready.
- are more likely to develop a bicultural identity, become biliterate, and have higher self-esteem, and
- may use their bilingual skills to access competitive job opportunities in a global world.

**What instruction will my child receive in a bilingual program?**

Your child will develop language and literacy skills in his/her primary language as a resource for acquiring English. He/she will develop reading, writing, listening, and speaking skills in English through the English Language Proficiency Standards (ELPS) in conjunction with grade-level academic instruction in the Texas Essential Knowledge and Skills (TEKS) for all content areas, including language arts, math, science, and social studies. Your child's teacher will be proficient in your child's primary language and English and is specially trained to meet your child's language needs. Instruction shall be designed to consider your child's unique learning experiences, instill a positive identity, and honor the culture and experiences of your child.

**How can parents support their child who participates in a bilingual program?**

Parents can support their child's acquisition of English by providing opportunities at home to practice their primary language and English. Research shows the benefits of primary language development on second language development and the positive transfer of skills from one language to another.

Some examples of parent activities to support English language acquisition include

- reading and engaging in conversations with your child in your primary language, and English, to support development of your child's oral language and literacy skills in the primary language and in English, and
- encouraging your child to achieve by providing him/her a place to study and showing interest in his/her school work.

Ways to support the bilingual program include

- participating as a member of the Language Proficiency Assessment Committee (LPAC),
- volunteering at your child's school and supporting your child's teacher in classroom activities; and
- serving on school and district-based decision-making or other advisory committees.

**Can a child who is also receiving other services participate in a bilingual program?**

Yes, students who receive services in other programs, such as special education, 504, response to intervention, and gifted/talented or advanced academics, may also participate in the bilingual program. The LPAC, in conjunction with other student service committees, meets to discuss and coordinate services based on the educational need of your child.

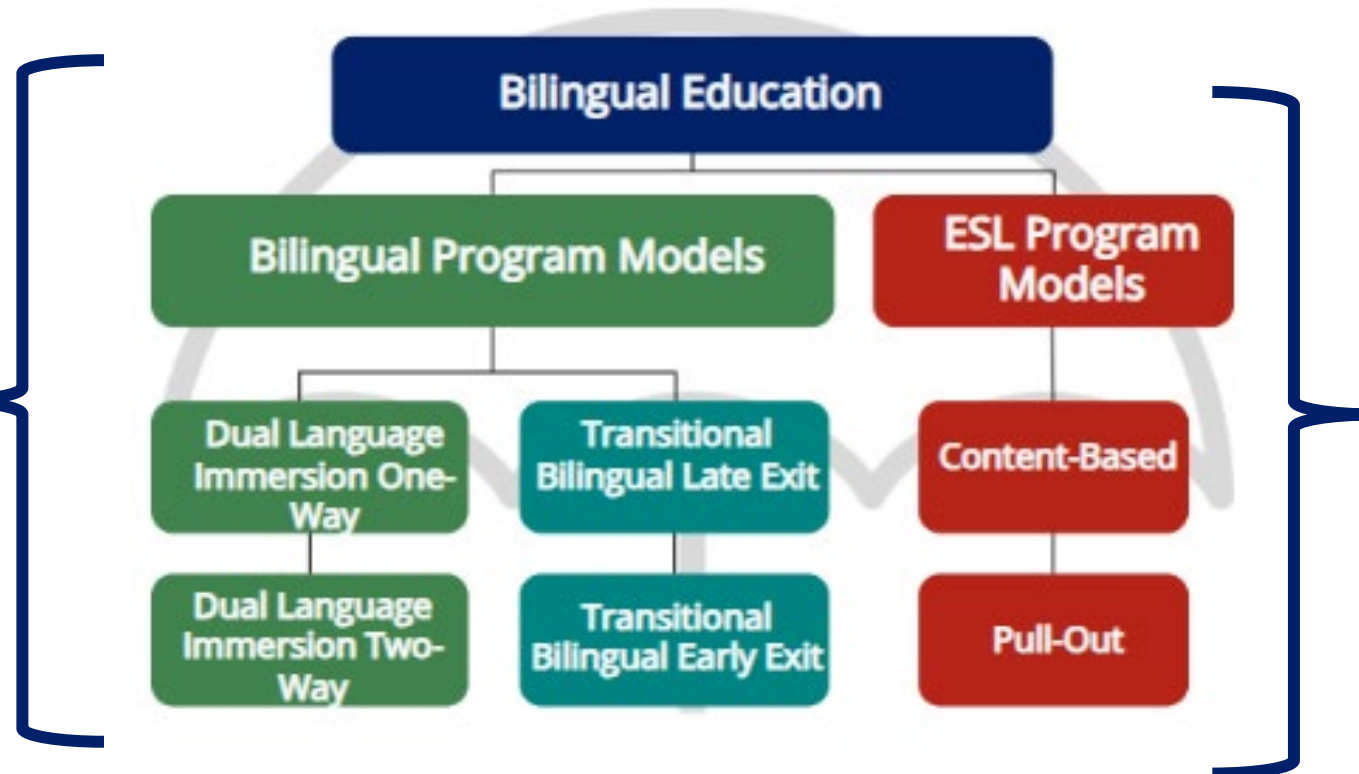
For more information please visit <https://www.tea.org/parents-and-families/>

Copyright ©2023 Texas Education Agency

**Resources for parents and families on the website TXEL.org**

# Approved Programs in Texas

✓ Districts with 20 Same-Language Students at the Same PK-12 Level Implement a Bilingual Program.



✓ Districts with fewer than 20 students with the same language at the same PK-12 level implement an ESL program

**Bilingual programs promote academic success by respecting the home language of the student.**

# The Academic and Language Benefits for Dually Identified Students



# Academic and Linguistic Benefits



IMPROVED COGNITIVE  
AND PROBLEM-SOLVING  
SKILLS



LEARNING ADVANTAGES  
IN ALL SUBJECTS



LANGUAGE  
ADVANCEMENT IN TWO  
LANGUAGES



SUPPORTS THE SPECIAL  
NEEDS OF DISABILITY

The research supports the participation of dually identified students in bilingual programs for long-term academic achievement,



**Respects language, identity, and disability.**



Increases self-esteem and motivation to learn content and develop academic language.

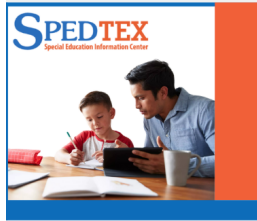
# Resources for Parents and Families





# Additional Resources for Parents and Families

## Featured Resources



### [SPEDTEX](#)

Find resources about your child's disability, your rights, as well as the supports and services available. Call and chat available in English and Spanish.



### [Early Childhood Texas](#)

Find resources and supports for you and for your children as they grow and develop regarding health, parenting, childcare, and eligibility programs.



### [Parent-Directed SPED Services](#)

Learn how to get a one-time \$1,500 online grant for parents and guardians of eligible students receiving SPED services.

## Featured Resources



### [Texas Reality Check](#)

Texas Reality Check will show you how much your living expenses will cost, and the amount of money you will need to earn to pay for them.



### [T3 Series](#)

Listen in one of the nine available languages to presentations from TEA and community supports in this virtual webinar.



### [Graduation Toolkit](#)

Learn how high school students can gain endorsements and experience to prepare them for future careers. [Spanish Version](#)

## Featured Resources



### [Equity in GT Education](#)

Learn about GT services available in Texas and how to advocate for your child's needs in the academic setting.



### [Subscribe to TXEL](#)

Subscribe to the portal to find out about events, resources, and guidance concerning your child and bilingual education in Texas.



## Parents and Families Newsletter

Winter 2024

**TXEL.ORG**





# Division of Support for Emerging Bilingual Students



**Dra. Xóchitl Anabel Rocha**  
Bilingual Programs Policy &  
Technical Assistance Manager



**Dr. Patricia Quesada**  
Bilingual Programs  
Coordinator



**Michelle Merrick**  
ESL Programs  
Coordinator



**Amy Johnson**  
Multiple Needs  
Coordinator



**Rickey Santellana**  
State/Federal Program  
Supervision & Support Director



**Raúl Alvarado**  
Monitoring  
Coordinator



**Vacant**  
Monitoring  
Coordinator



**Jorge Vela**  
Project  
Specialist

# ¡Mil gracias! Thank you!



**Dr. Xóchitl Anabel Rocha**  
Policy and Technical Assistance  
Manager for Bilingual Programs

## CONTACT

Division of Support for  
Emerging Bilingual  
Students



**EmergentBilingualSupport**  
**@tea.texas.gov**



**TXEL.org**



**YOUR SOURCE**

FOR SPECIAL EDUCATION INFORMATION

**SPEDTEX**  
Special Education Information Center



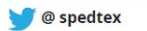
**1.855.773.3839**  
**WWW.SPEDTEX.ORG**

Collaborative Project

Follow Us



SpedTex



@spedtex

**Contact SPEDTex** with  
questions about special  
education!

**SPEDTEX.ORG**